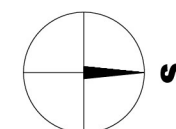
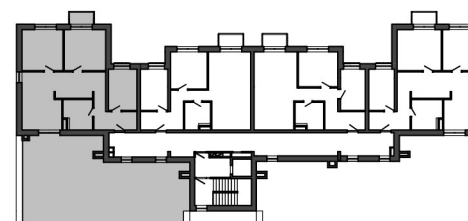
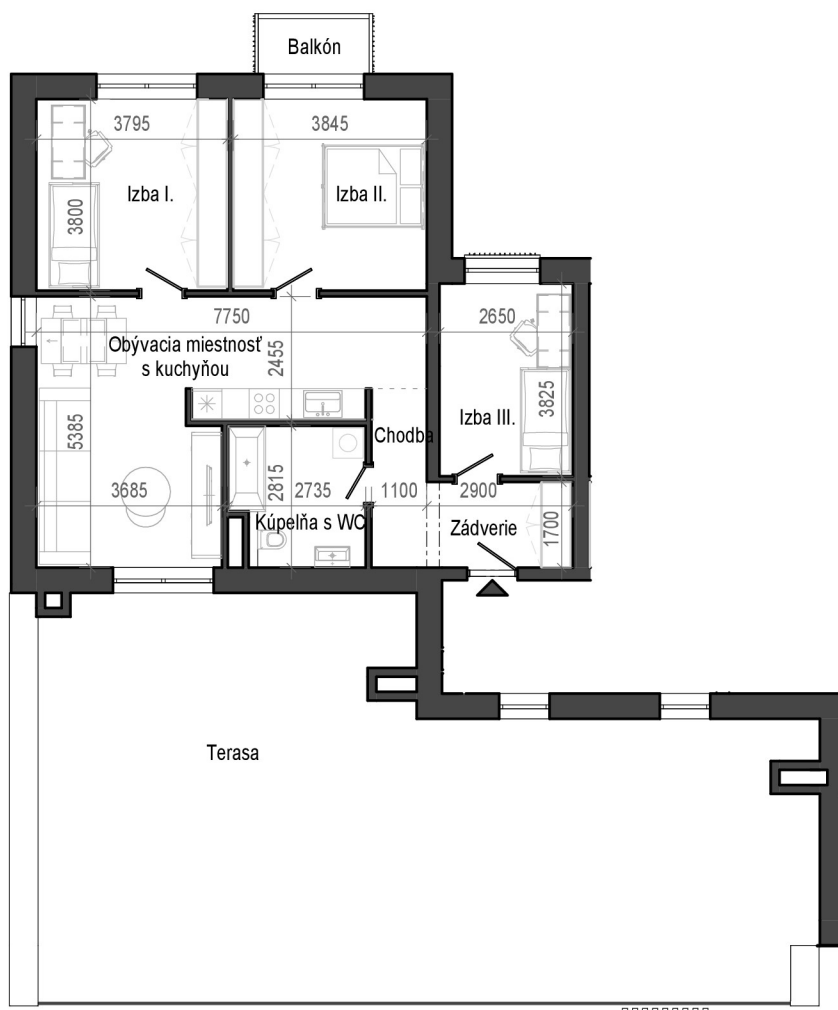




# Istrica



BYTOVÝ DOM B12

NÁZOV	PLOCHA
Zádvrie	4.51 m <sup>2</sup>
Chodba	3.91 m <sup>2</sup>
Kúpeľňa s WC	7.04 m <sup>2</sup>
Obývacia miestnosť s kuchyňou	28.91 m <sup>2</sup>
Izba I.	14.41 m <sup>2</sup>
Izba II.	14.60 m <sup>2</sup>
Izba III.	10.14 m <sup>2</sup>
Terasa	104.41 m <sup>2</sup>
Balkón	2.42 m <sup>2</sup>
	190.34 m <sup>2</sup>