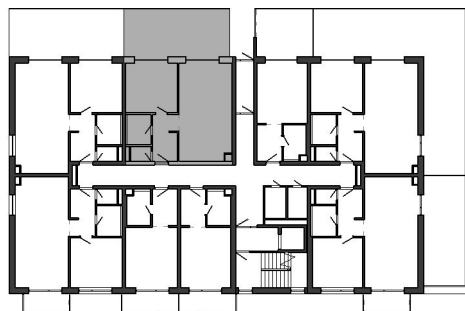
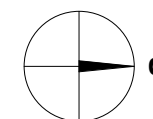
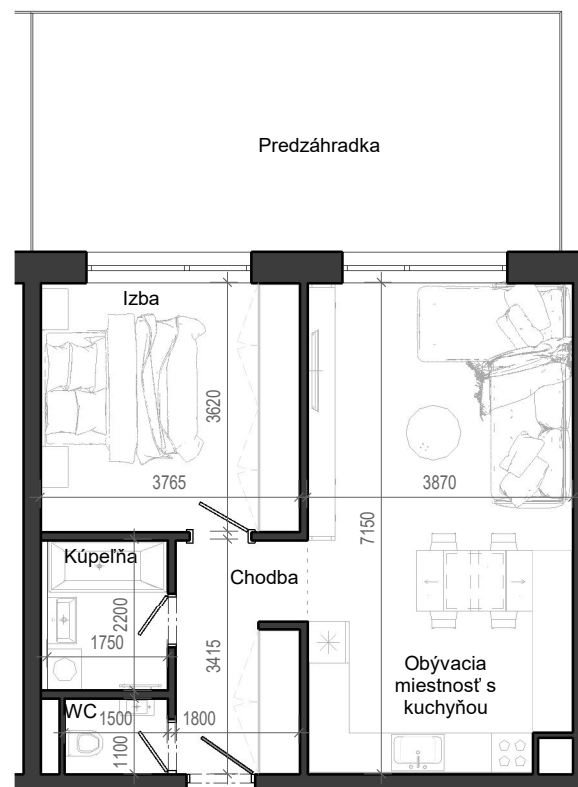




# Istrica



NÁZOV	PLOCHA
Chodba	6.22 m <sup>2</sup>
WC	1.65 m <sup>2</sup>
Kúpeľňa	3.85 m <sup>2</sup>
Izba	13.63 m <sup>2</sup>
Obývacia miestnosť s kuchyňou	27.31 m <sup>2</sup>
Predzáhradka	52.66 m <sup>2</sup>
	26.95 m <sup>2</sup>



BYTOVÝ DOM B12